

# **Printer Driver Instruction Manual**

*CW-01*

October 1, 2005 Ver.1.00

**CITIZEN SYSTEMS JAPAN CO.,LTD.**

**●Concerning Copyright**

The copyrights for the CW Printer Driver Instruction Manual, the CW Printer Driver that is included with the printer, and the contents of the CD are the property of the CITIZEN SYSTEMS JAPAN Co.,Ltd. Reproduction of any or all of the contents of the CW Printer Driver Instruction Manual, the CW Printer Driver that is included with the printer, and the contents of the CD without consent of the company is a violation of copyright law.

However, for non-commercial personal use purposes, you may make 1 copy of the Printer Driver Instruction Manual solely for back-up-purposes.

**●Notes for Safety Purposes**

Please read the Instruction Manual well before using the printer, and follow all instructions carefully. Further, the contents of the safety warnings and comments in the Instruction Manual concerning use met safety standards at the time of publishing.

**●Concerning modification**

The CW01-H01 printer and the CW Printer Driver and CD contents were planned, developed, and manufactured by CITIZEN SYSTEMS JAPAN Co.,Ltd.

For safety purposes, any modification is prohibited.

# Contents

---

Contents	i
Contents	ii
<b>Chapter 1 Install</b>	<b>1</b>
1.1 Printer and Host computer Connection	1
1.2 Found New Hardware Wizard	1
1.3 Install from Add Printer Wizard	5
<b>Chapter 2 Properties</b>	<b>11</b>
2.1 Opening Printer Properties	11
2.2 Explanation of Print Setting Functions	12
2.2.1 Layout	12
2.2.2 Advanced Options	13
2.2.3 Paper/Quality	16
2.2.4 Paper options	16
2.2.5 Color Adjustment	17
2.3 Default Values for Various Settings	18
2.4 Color Management	18
<b>Chapter 3 Driver Removal</b>	<b>19</b>

# Chapter 1 Install

## 1.1 Printer and Host computer Connection

Power ON the CW and connect the CW printer and the host by USB cable.

\* Please refer to the manual for the CW printer for connection if needed.

After that, if [Found New Hardware Wizard] is initiated, please install using the procedure in [1.2 Found New Hardware Wizard].

If [Found New Hardware Wizard] is not initiated, please install in accordance with [1.3 Install from Add Printer Wizard].

## 1.2 Found New Hardware Wizard

After confirming [Install from a list or specific location [Advanced]] is selected, click [Next].

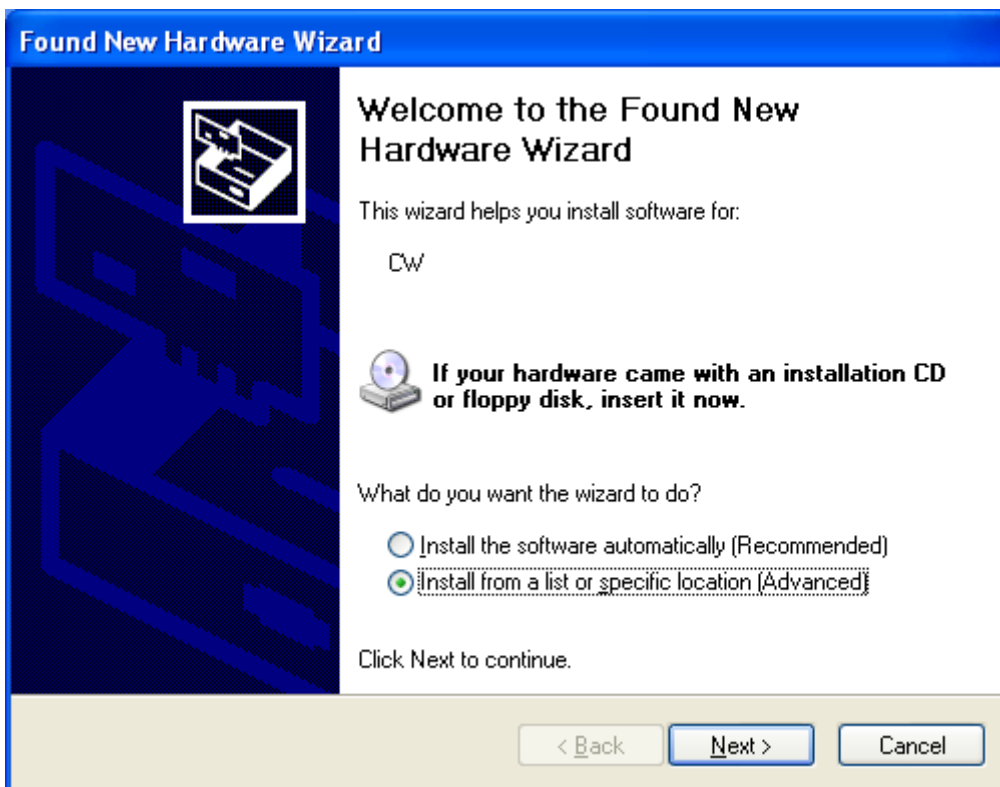


Fig 1.1 Found New Hardware Wizard

Select [Search for the best driver in these locations], and confirm that [Include this location in the search] is selected.

Specify the location of the installation disk using the [Browse] button, and click [Next].

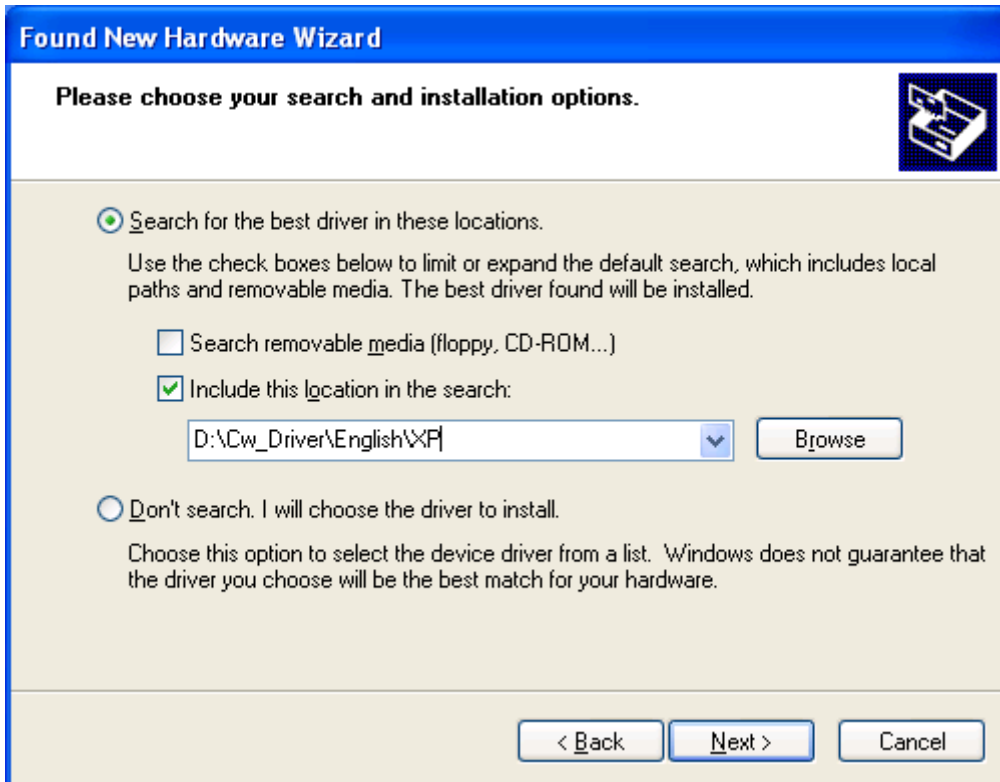


Fig 1.2 Search and Install Option

After searching the driver file, software installation is initiated. It takes some time for the software installation.

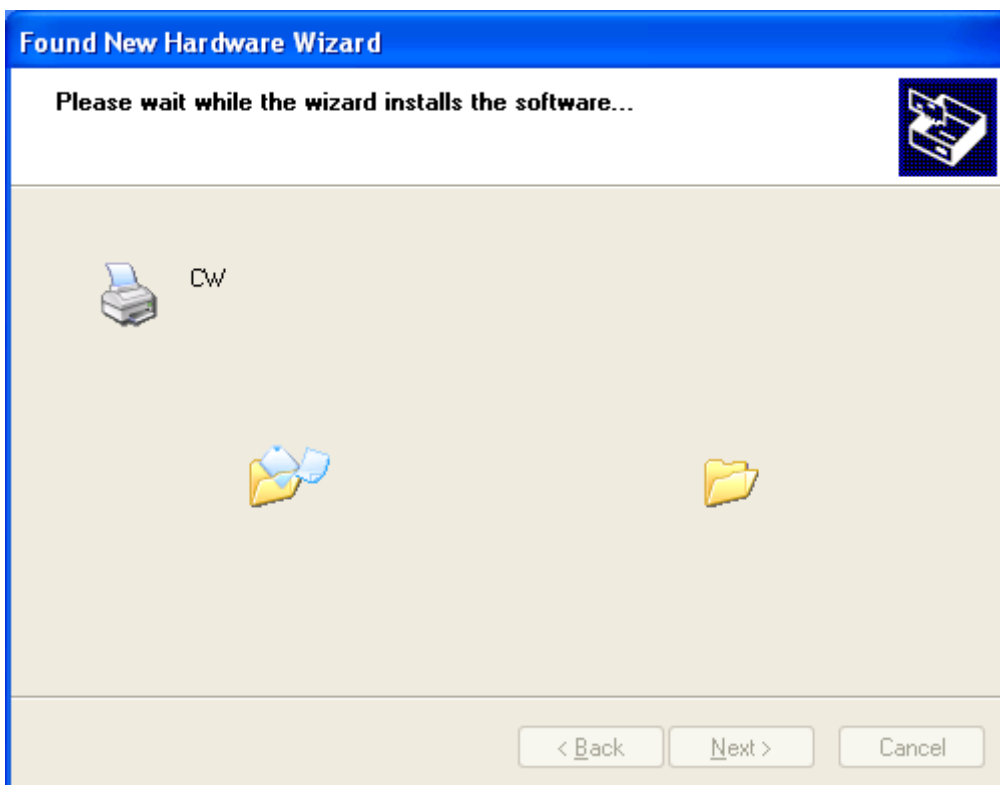


Fig 1.3 Software Installation

During software installation, the following message will be displayed. Please click [Continue Anyway] to continue.



Fig 1.4 Software Installation

Click [Finish] to finish the wizard.

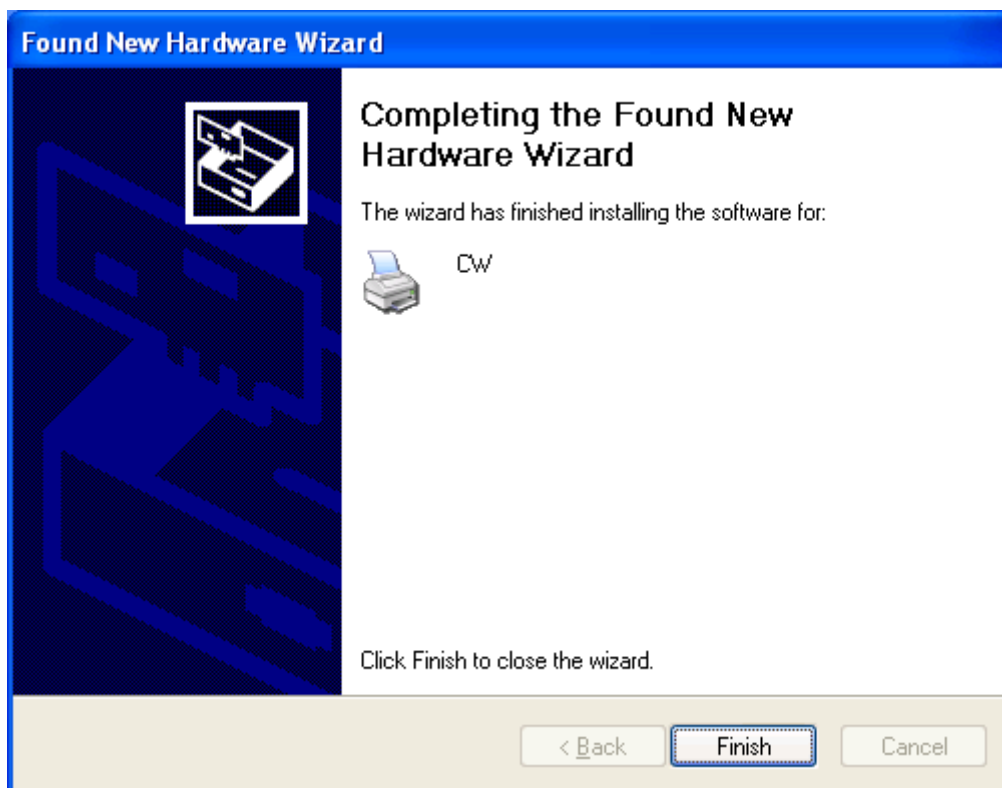
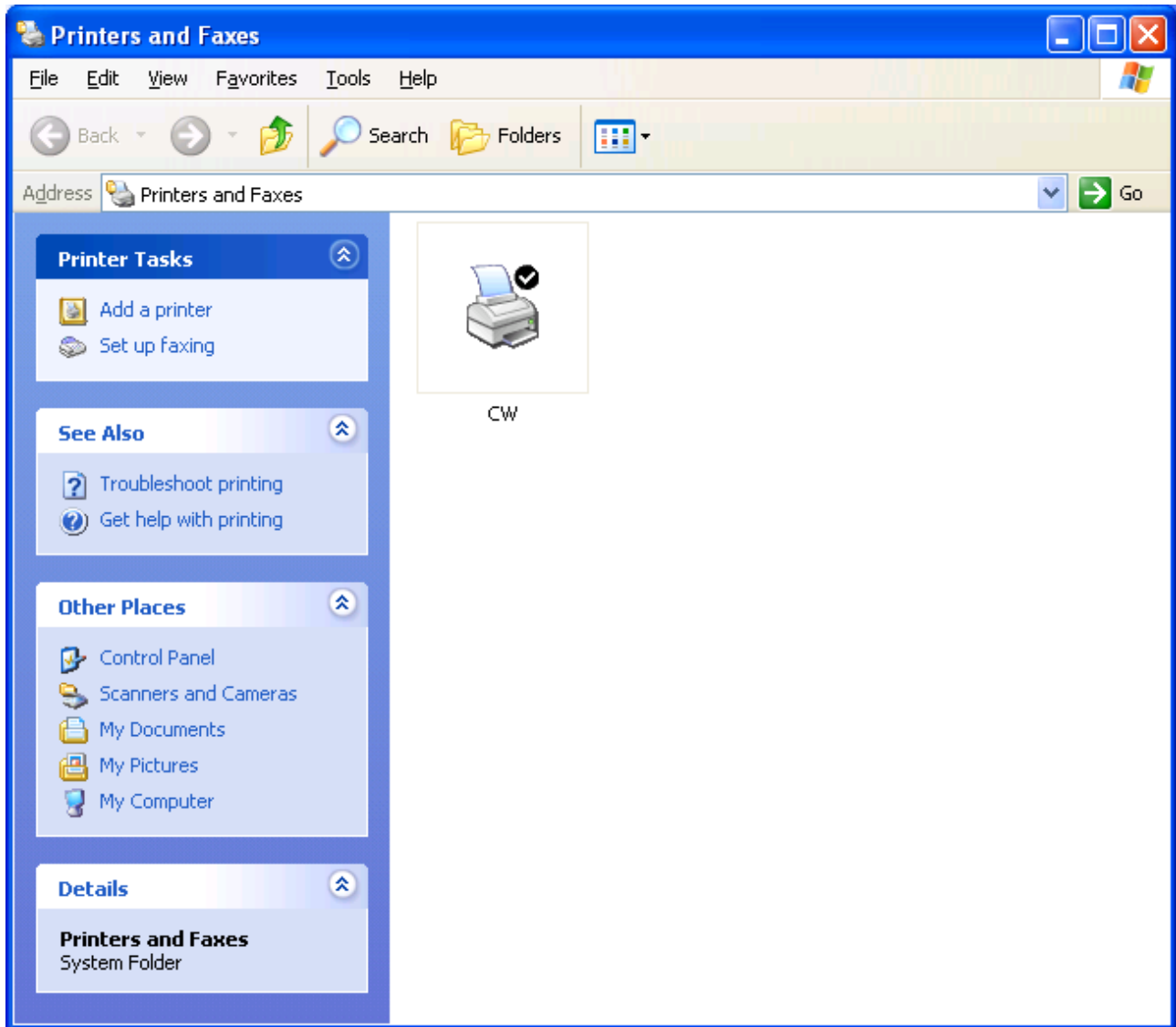


Fig 1.5 Quit from Found New Hardware Wizard

Click [start] [Printer and Faxes] and confirm that [CW] is shown.



FAX Fig 1.6 Printers and Faxes

## 1.3 Install from Add Printer Wizard

Click [start] [Printers and Faxes].

(Depending on the host computer, [Printers and Faxes] may not be indicated. In that case, click [start] [Control Panel] [Printer and Other Hardware] [Printers and Faxes])

Click [Add a printer].

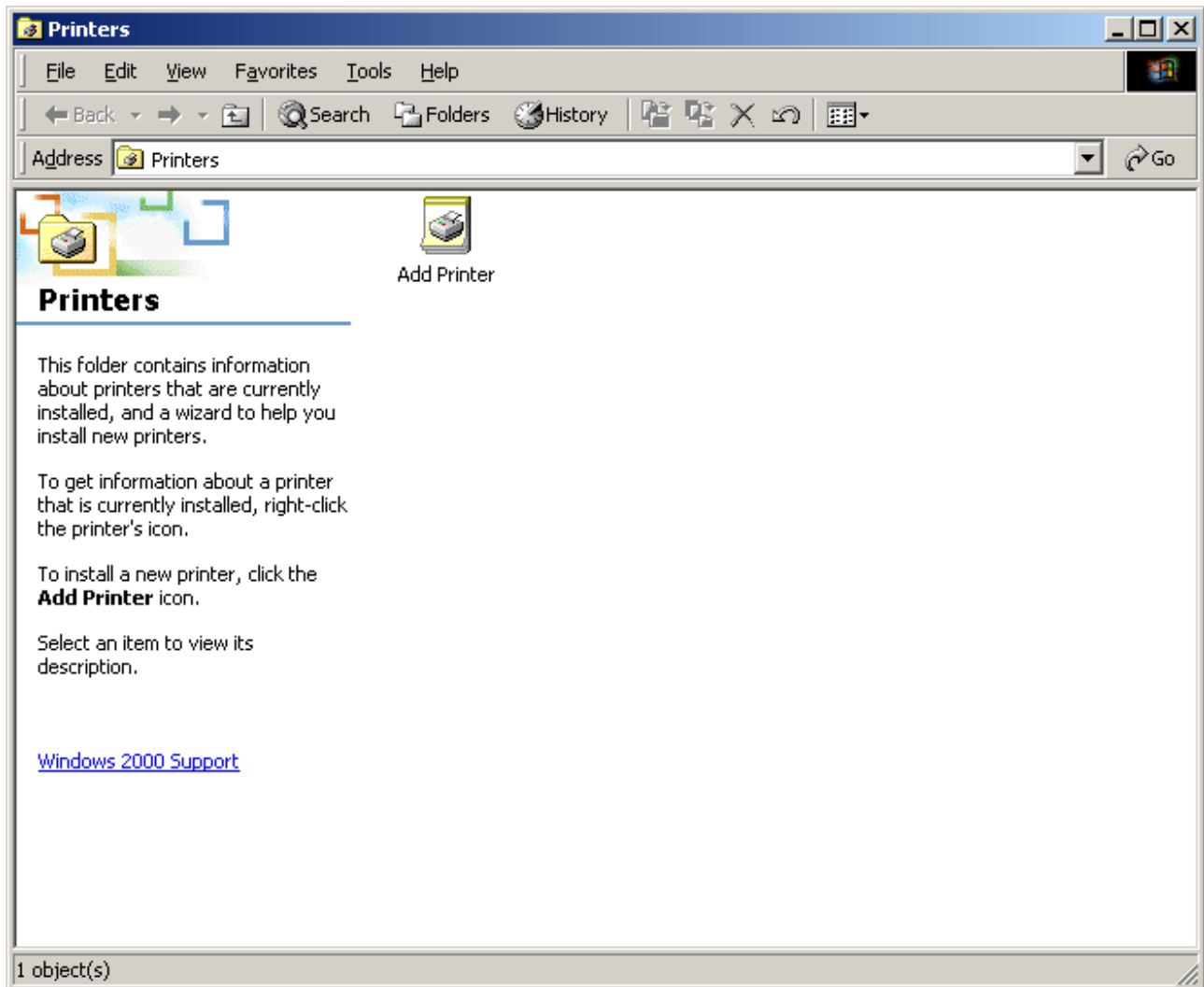


Fig 1.7 Printers and Faxes

After [Add Printer Wizard] window is shown, click [Next].

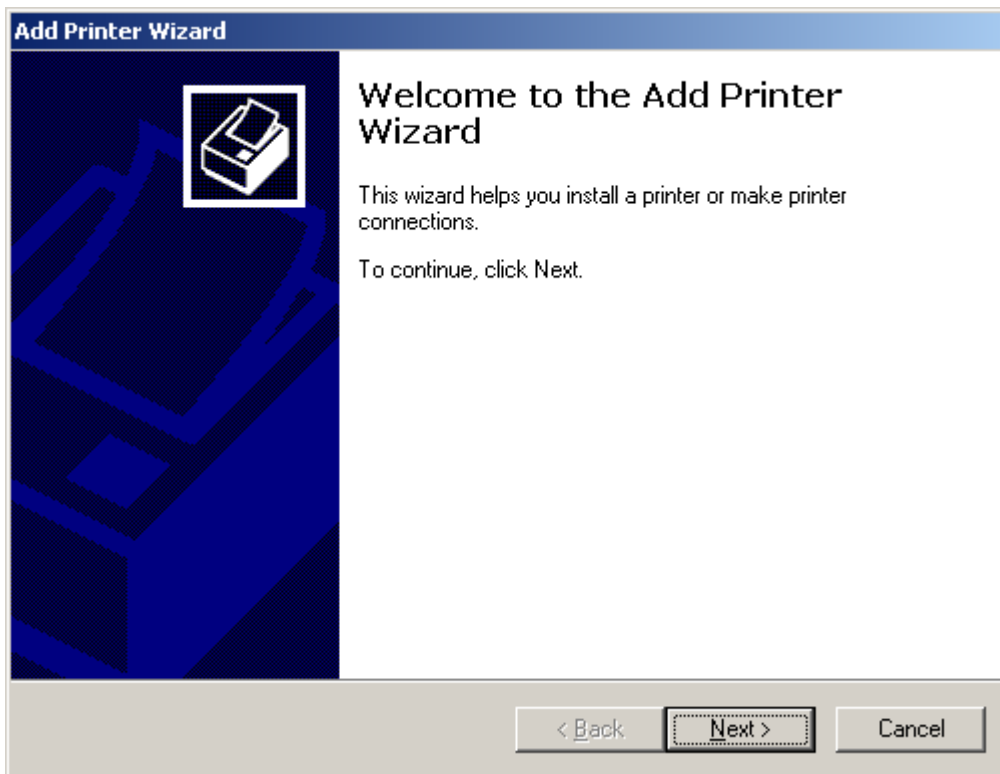


Fig 1.8 Start of Add Printer Wizard

In the [Local or Network Printer] window, select [Local printer attached to this computer], and deselect [Automatically detect and install my Plug and Play printer], then click [Next].

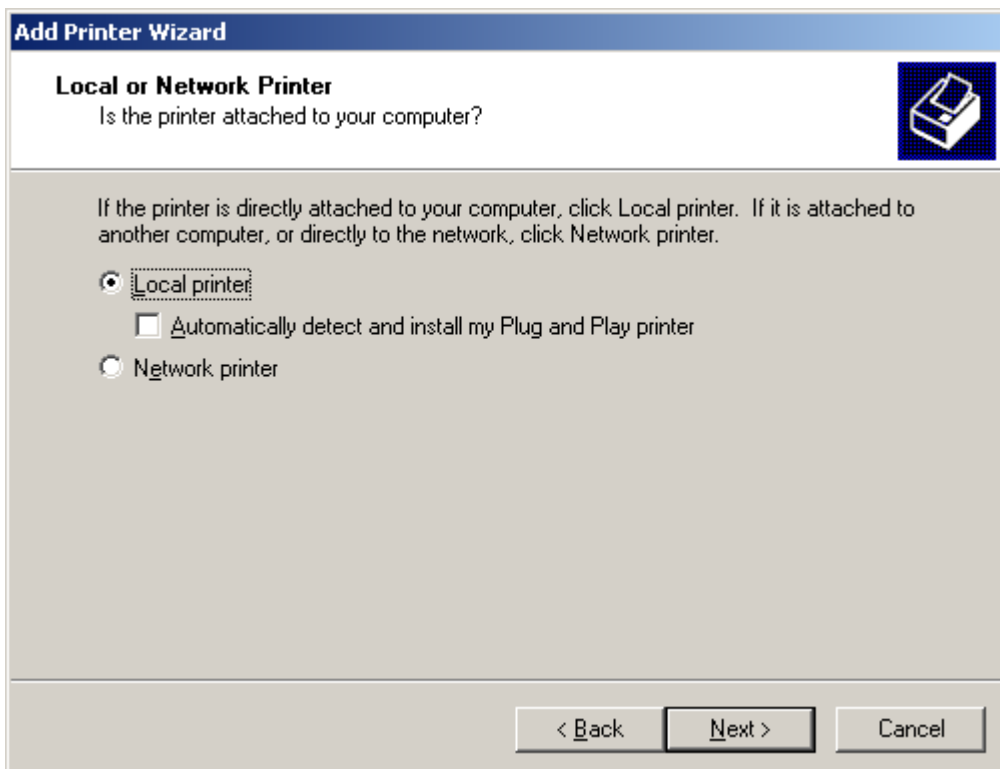


Fig 1.9 Local or Network Printer

In the [Select a Printer Port] window, select [Use the following port] and assign USB port ([USB001] so on) from the dropdown list, then click [Next].

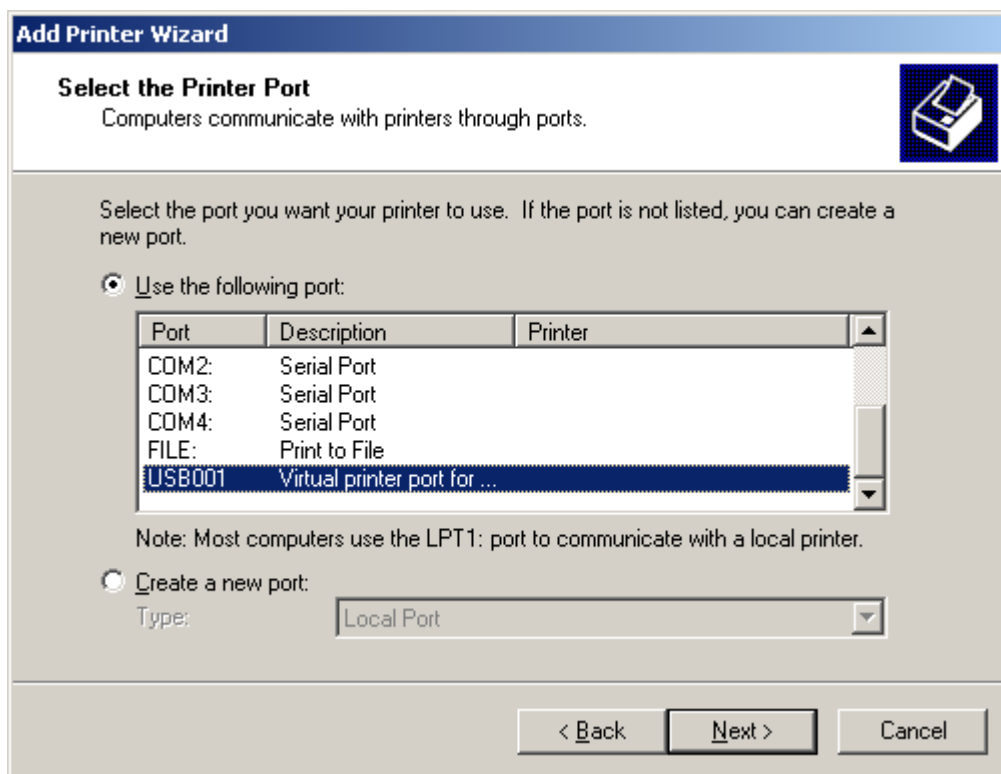
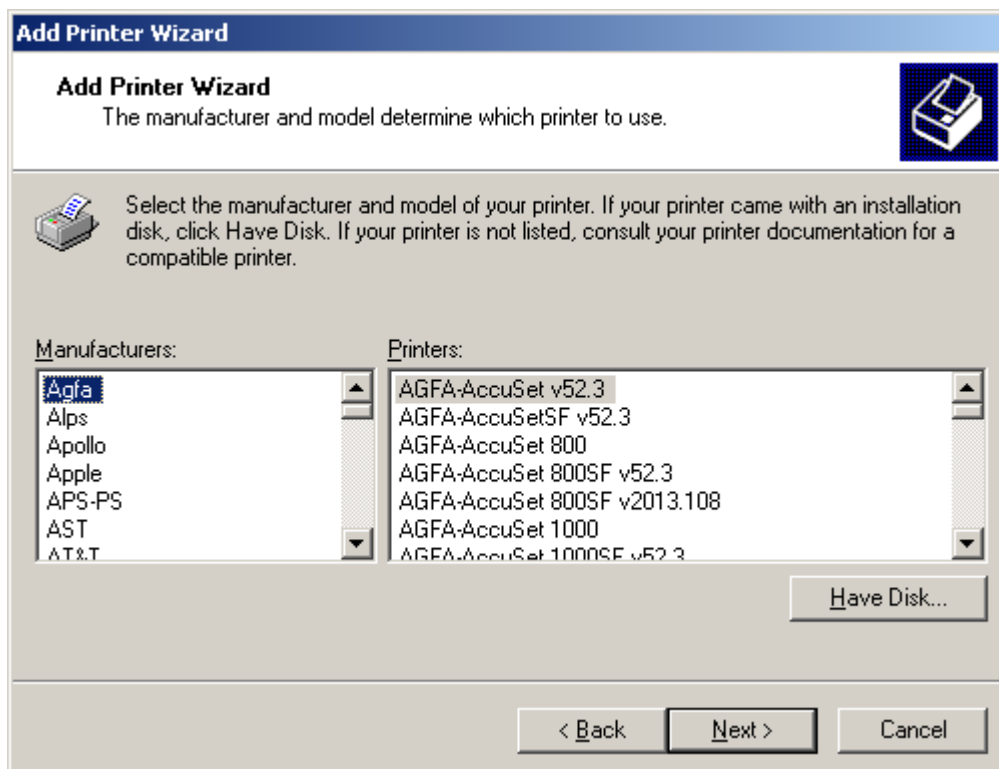


Fig 1.10 Printer port assign

After [Install Printer Software] is shown, click [Have Disk].



In the [Install From Disk] window, select the location of the installation disk using [Browse].

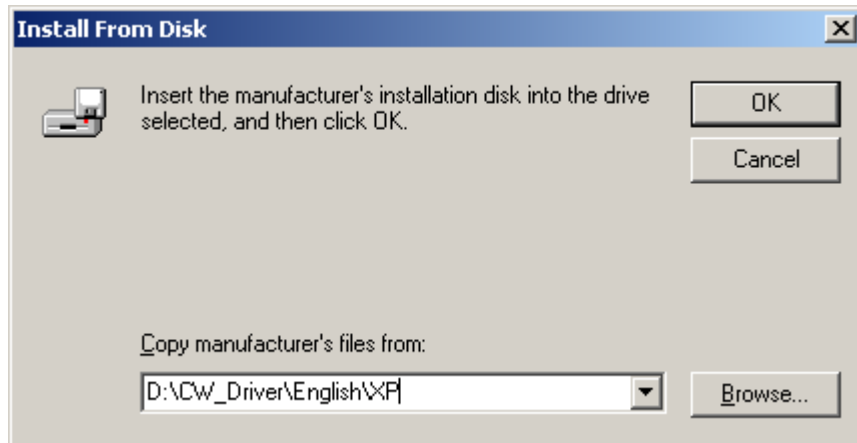


Fig 1.12 Install from disk

After confirming that [CW] is shown, click [Next].

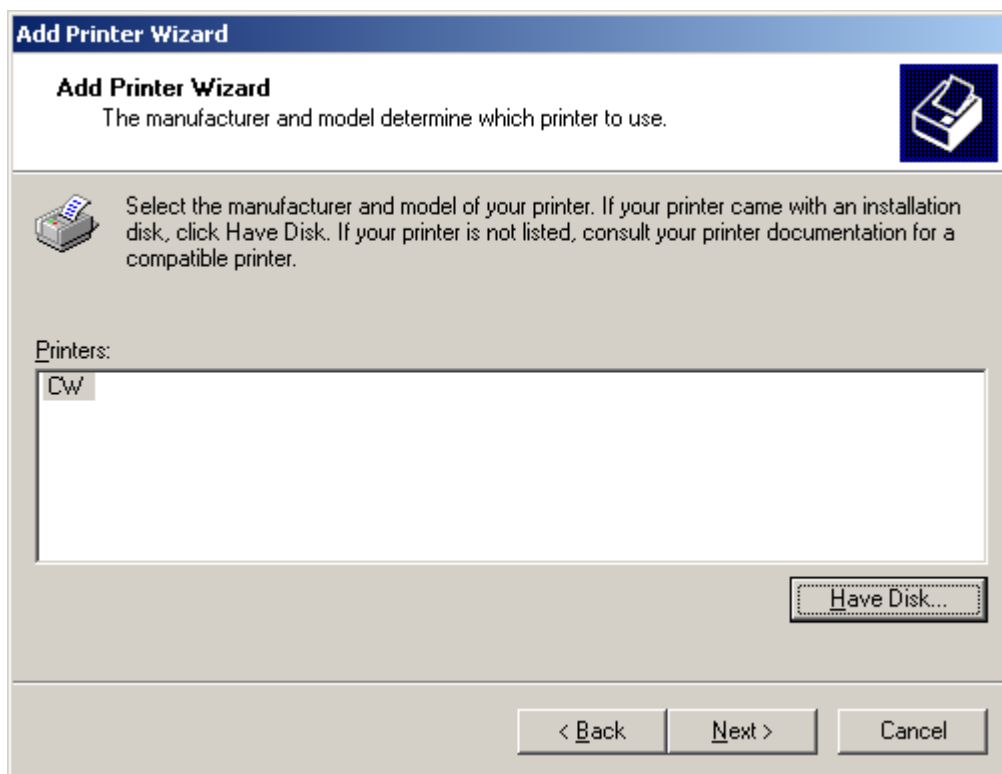


Fig 1.13 Printer software installation

In the [Name Your Printer] window, assign a name to the printer and click [Next].

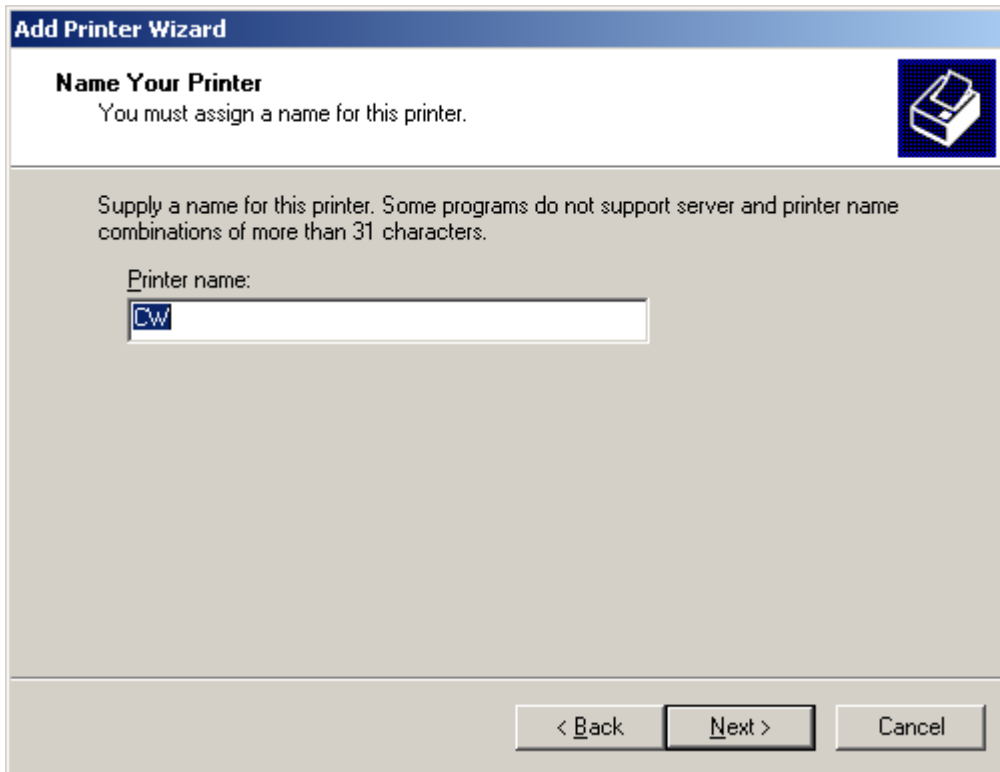


Fig 1.14 Assigning a name to the printer

In the [Print Test Page] window, select [No] and click [Next].

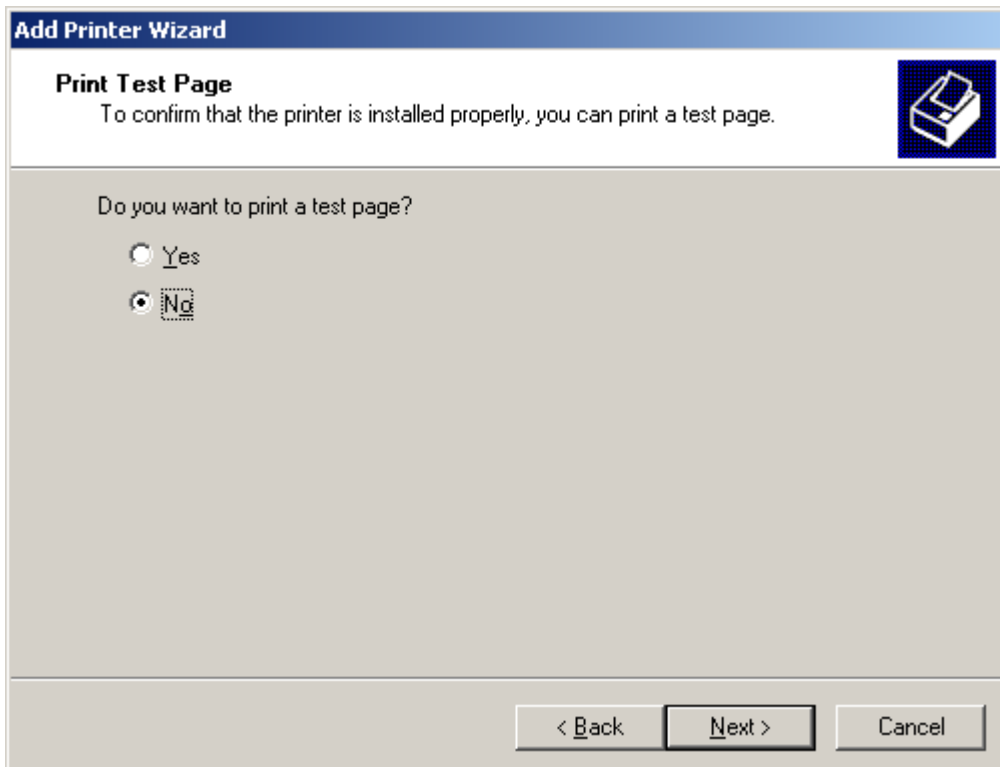


Fig 1.15 Print test page

In the [Completing the Add Printer Wizard] window, click [Finish].



Fig 1.16 Completing the Add Printer Wizard

When installing the software, the following message may be displayed. Click [Yes] to continue.



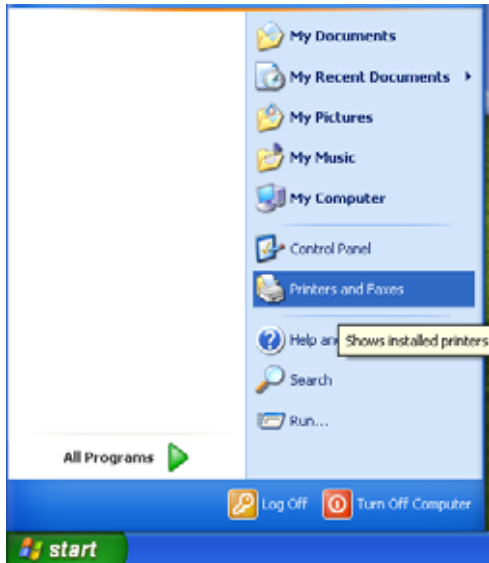
Fig 1.17 Hardware installation

## Chapter 2 Properties

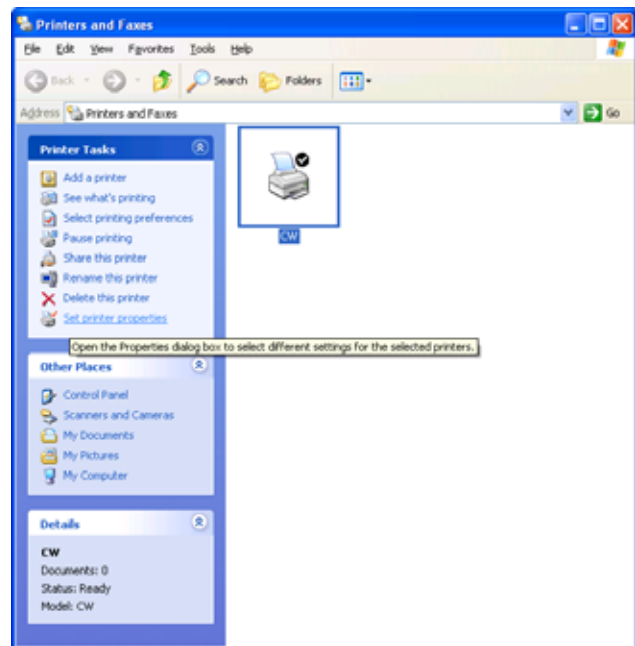
Various printer settings can be made using the CW Driver properties. As a rule, the printer settings should not be altered. Use the default settings present at installation. Alter paper-size settings at the Application side. Before operation, be sure to have a good understanding of the contents.

### 2.1 Opening Printer Properties

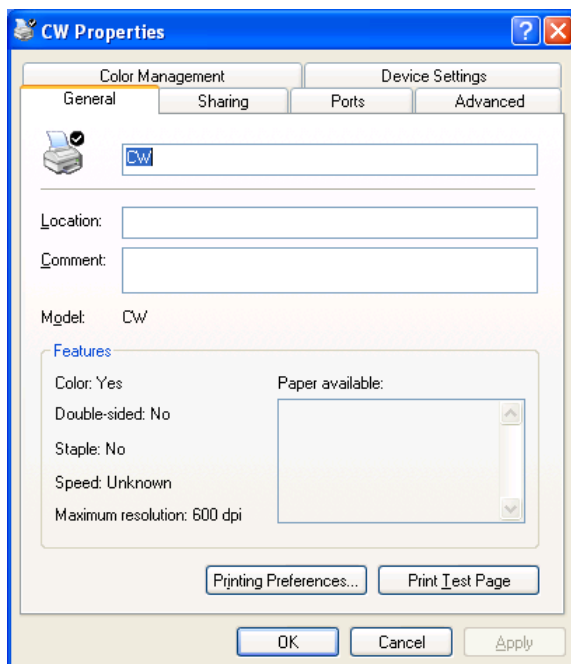
1. Start in order using START → All Programs → Printers and Faxes



2. Select the CW printer → Open Set printer properties



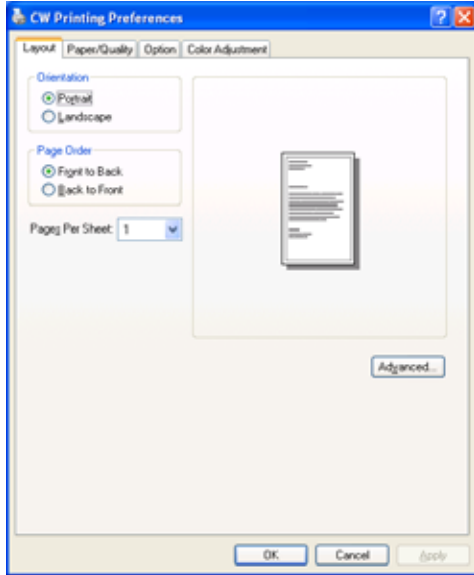
3. The CW Properties window will appear.



## 2.2 Explanation of Print Setting Functions

2.1 From the Properties window, by selecting Print Settings you can make various print settings.

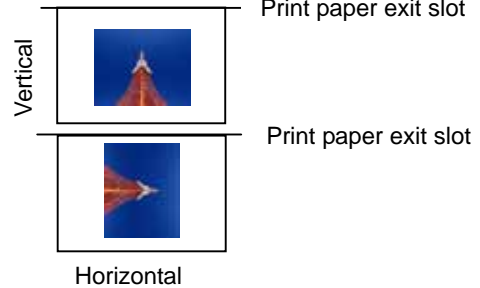
### 2.2.1 Layout



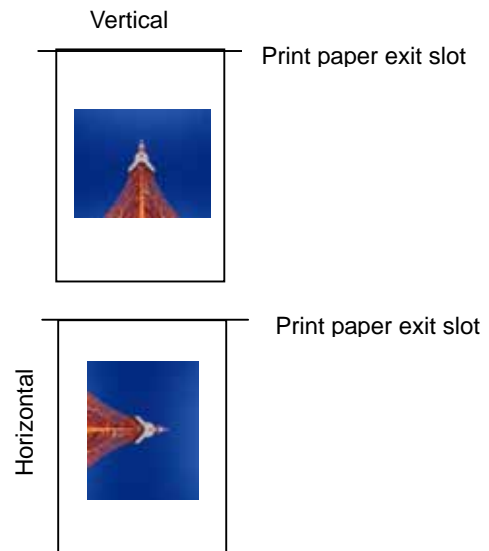
2.2.1 Dia.) Layout tab

Output image depending on print direction

Ex.) For PC, L



For 2L, A5



#### Print Orientation

Assign print orientation as vertical or horizontal.

Output images of the original image without rotation are shown at the right.



Original image orientation

#### Page Order

When printing multiple images in the application, you can set the order.

Ex.) Print order



#### Pages Per Sheet

Prints the designated fractional size.

Ex.) Fractional size

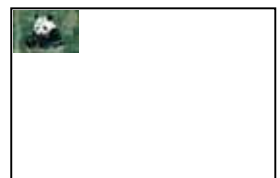
Whole



Quarter-size

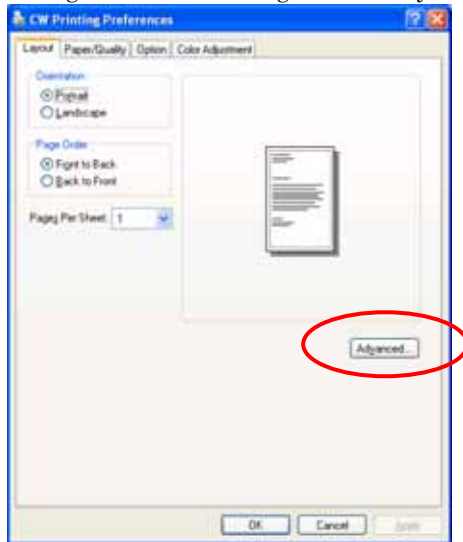


One-ninth size

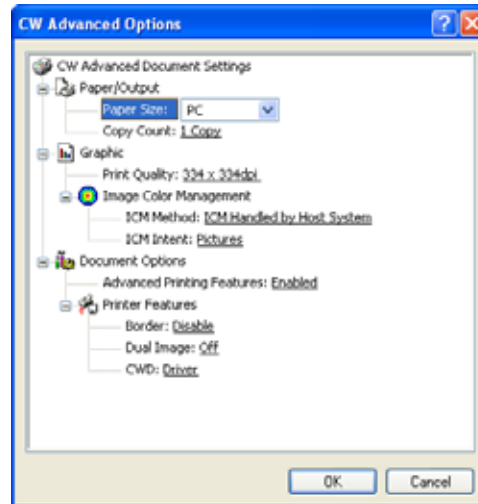


## 2.2.2 Advanced Options

By selecting [Advanced Settings] in the Layout window, various settings can be made using Advanced Options.



2.2.2 Dia.1) Advanced Settings



2.2.2 Dia. 2) Advanced Options tab

### Paper Size

You can designate the paper size. Please match the paper size to the media size with which the printer is equipped

### Copy Count

You can designate the number of times an image will be printed.

### Print Quality

You can designate the print quality. Please match the print quality to the printer settings.

### ICM Method

ICM intent	Function
<b>ICM Disabled</b>	3.2.4 Synchronous with "Color Management: None" in paper option.
<b>ICM Handled by Host System</b>	3.2.4 Synchronous with "Color Management: ICM" in paper option. Performs color management with the driver.
<b>ICM Handled by Printer</b>	The printer doesn't perform color management, so this is the same as setting "Color Management: None".

### ICM Intent

This designates the rendering method when using ICM. Always have the ICC profile for the CW set to "Picture". Please do not use it at other settings.

### Advanced Printing Features

Always have it set to "Enabled". Please do not use it at other settings.

### Frame

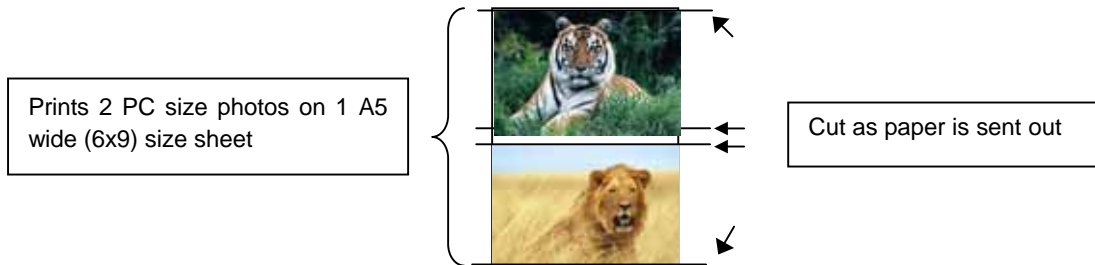
Synchronous with the frame option in the paper option.

### Dual Image Printing

With the CW, it is possible to split A5 media into 2 PC size images and print them. Dual image printing can be done under the following conditions.

1. A5 media is set in the printer.
2. The paper size setting in the printer driver is set to "PC", and the dual image setting should be "On".
3. Multiple images are sent from the application.

Note ) The dual image setting works on a job basis, so multiple pages can be printed in one job. The printer will print 2 images at once, and the paper will be cut as it exits the printer.



3.2.2 Dia. 3) Dual Layout image

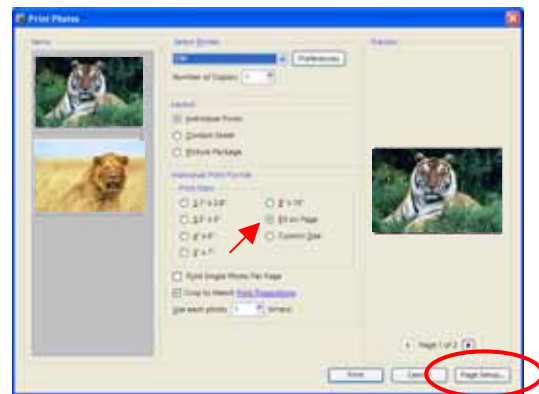
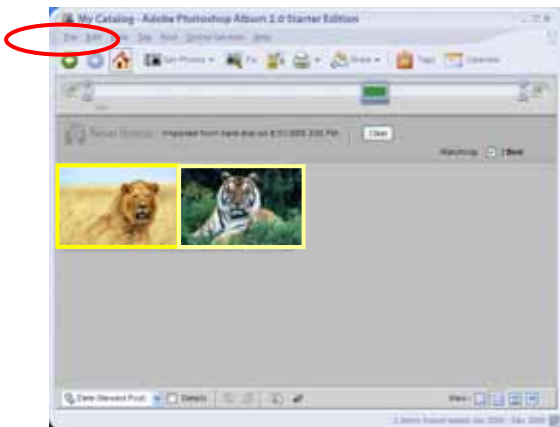
This takes place for each dual image. In the case of an odd number of images, the last image will come out as a PC size photo. However, an A5 portion of the ribbon will be used.

#### < Example of Application Use >

This is an example using Adobe Systems Photoshop Album.

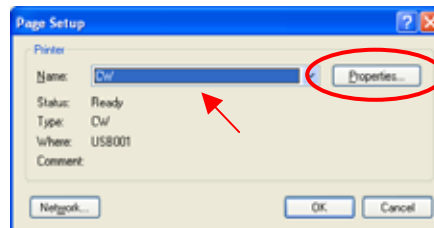
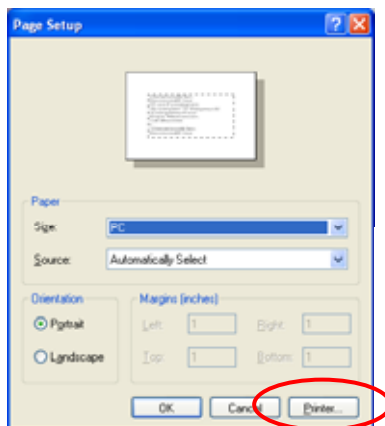
Step 1. Using File > Get Photo, select 2 or more images, and go to File > Print.

Step 2. In "Print Sizes", select "Fit to Page". Then click "Page Setup".



Step 3. Click on "Printer".

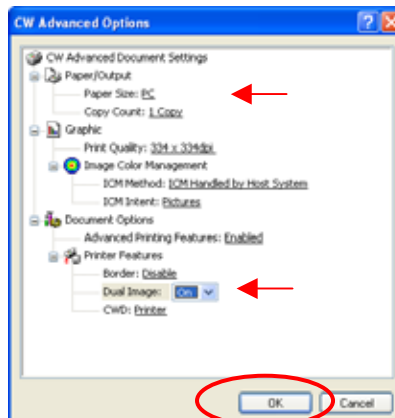
Step 4. After selecting the printer, open "Properties".



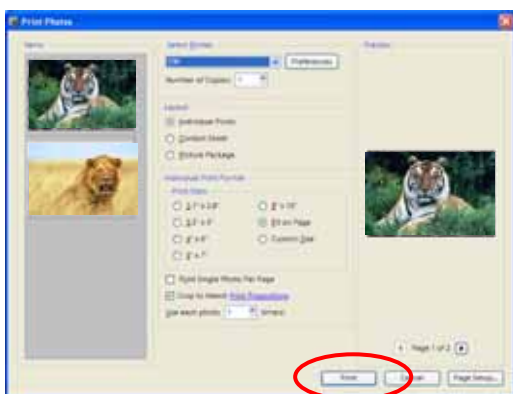
Step 5. Click on “Advanced”.



Step 6. Set the Paper Size to “PC” and set Dual Image to “On”. Then click “OK” on the windows from steps 6 5 4 3, returning to the window displayed in Step 2.



Step 7. Click on “Print”.

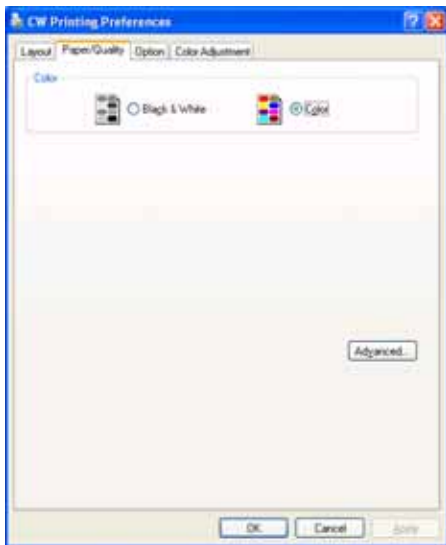


### Color Control (CWD)

The control data (CWD) can be sent to the printer from the driver, or you can choose to use the control data in the printer.

Object of ICM	Function
<b>Driver</b>	Control data (CWD) is sent from the driver.  Printer resolution and other parameters can be set from the driver. The control data is sent to the printer when the printer is turned ON, or at the first printing after the print quality resolution is changed. The control data is stored temporarily in the printer, and returns to the default values when the printer is turned OFF.
<b>Printer</b>	The printer’s control data is used.  Control data is not sent from the driver. Select this when you want to use the printer’s control conditions. If the resolution setting at the printer and the driver’s print quality resolution don’t match, it won’t print.

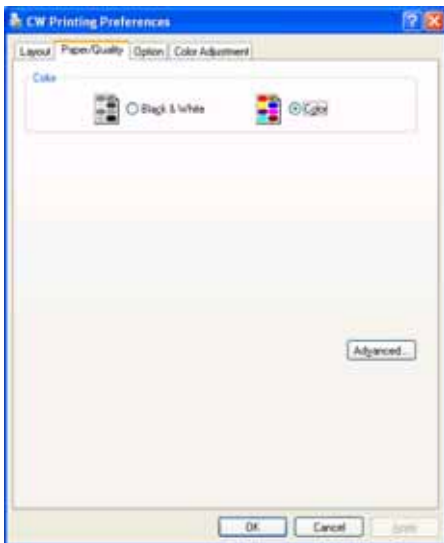
## 2.2.3 Paper/Quality



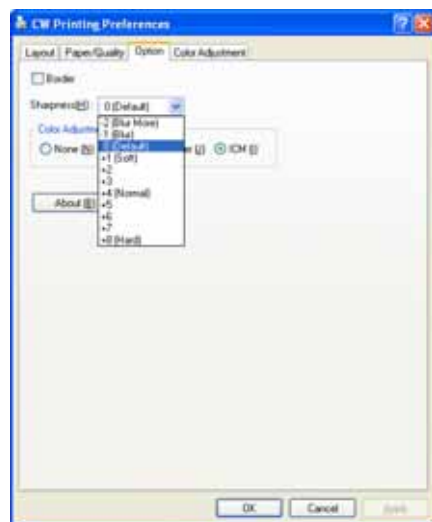
2.2.3 Dia.) Paper/Quality tab

**Color** Please set to color print. Do not use for black and white printing.

## 2.2.4 Paper options



2.2.4 Dia.1) Paper option tab



2.2.4 Dia.2) Sharpness setting

### Frame

Designates yes or no for frame (check means with frame). Synchronous with Frame in the Advanced Settings.

### Sharpness

Processes for 11 sharpness levels (Dia. 2). 0(Initial setting) means there is no sharpness processing. Minus(-) blurs the image, and plus(+) increases the sharpness.

### Color Adjustment

#### None

Synchronous with the ICM Method in the Advanced Settings. Checking this item disables ICM and the Color Adjustment tab, and color management does not occur from the driver.

#### Handled by Driver

Checking this item disables ICM and [3.2.5 Color Adjustment](#) is enabled. The adjustment values for gamma, brightness, contrast, and chroma are shown.

#### ICM

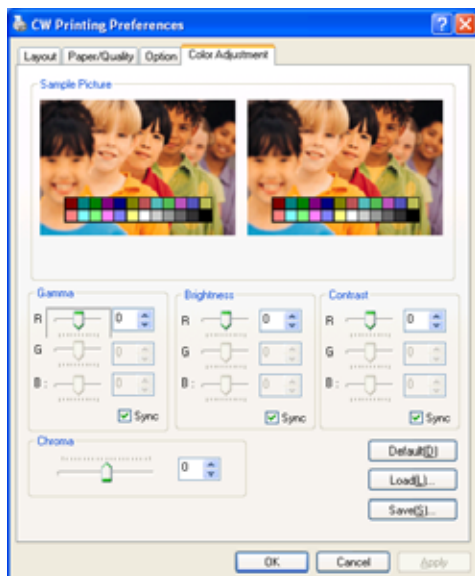
Synchronous with the ICM Method in the Advanced Settings (ICM Handled by Host System). Checking this item enables color management from the driver.

### About

Displays the driver version.

### 3.2.5 Color Adjustment

If you check Handled by Driver in 3.2.4 Paper Option, the respective color adjustment values in the Color Adjustment tab are reflected in the image.



2.2.5 Dia.) Color Adjustment tab

Setting ranges in the Color Adjustment tab are as follows:

Adjustment Item	Adjustment Value
<b>Gamma</b>	-100(dark) ~ 100(light) (0 means no adjustment, Gamma 2.0 ~ 0.5) Adjusts the density of the highlights in the image. The greater the gamma value, the brighter the highlights. Synchronous check box ON : Sets RGB at the same value OFF:Sets RGB at a different value
<b>Brightness</b>	-100(dark) ~ 100(light) (0 means no adjustment) Adjusts the brightness of the image. The larger the value, the greater the overall brightness of the image. Synchronous check box ON :Sets RGB at the same value OFF:Sets RGB at a different value
<b>Contrast</b>	-100(weak) ~ 100(strong) (0 means no adjustment) Adjusts the contrast of the image. The larger the value, the greater the contrast. Synchronous check box ON : Sets RGB at the same value OFF: Sets RGB at a different value
<b>Chroma</b>	-100(weak) ~ 100(strong) (0 means no adjustment) Adjusts the color saturation of the image.

## 2.3 Default Values for Various Settings

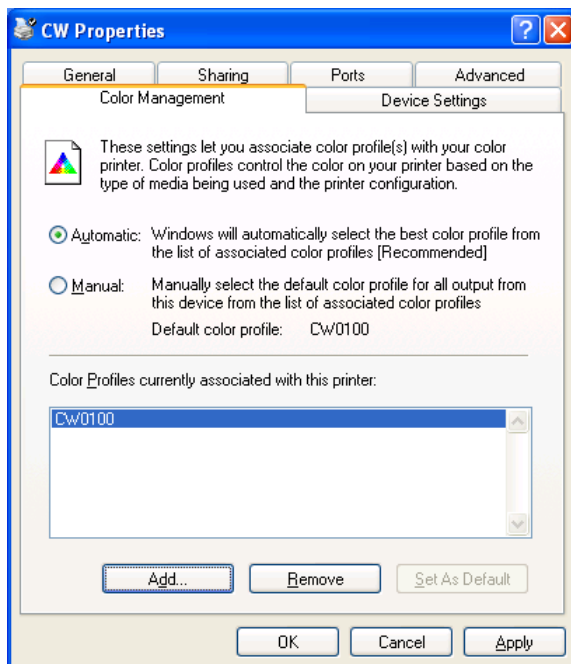
Default values for each option (at the time of installation) are shown below. If the printer driver does not work correctly after changing the options, please return the options to the default settings.

Tab	Options		Default	
Layout	Orientation		Portrait	
	Page Order		Front to Back	
	Pages Per Sheet		1	
Paper/Quality	Color		Color	
Option	Frame		Disable	
	Sharpness		0 (Default)	
	Color Adjustment		ICM	
Color Adjustment	Gamma		0	
	Brightness		0	
	Contrast		0	
	Chroma		0	
Advanced <small>(Click [Advanced] button of Layout tab)</small>	Paper/Output	Paper Size	PC	
		Copy Count	1	
	Graphic	Print Quality	334 x 334dpi	
		Image Color Management	ICM Method	ICM Handled by Host System
			ICM Intent	Pictures
	Document Option	Advanced Printing Features		Enable
		Printer Features	Border	Disable
			Dual Image	Off
			CWD	Driver

Chart 2.3 Print Setting Default Values

## 2.4 Color Management

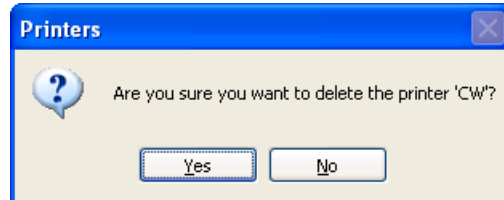
In [Color Management], this designates the color profile. Default at installation associates [CWxxxx]. xxxx is a 4-digit number that refers to the version.



2.4 Dia.) Color Management

## Chapter 3 Driver Removal

1. From the [Printers and Faxes] window, select the CW printer. Select [Delete this printer]. Are you sure you want to delete the printer "CW" ? → select "Yes" to remove the printer.



2. After the CW printer has been removed, in the same way select File → Server Properties. The Print Server Properties dialog box should appear. Select the Drivers tab. After selecting driver "CW", click "Remove(R)". The confirmation box will appear. By clicking "Yes", the driver will be removed.

