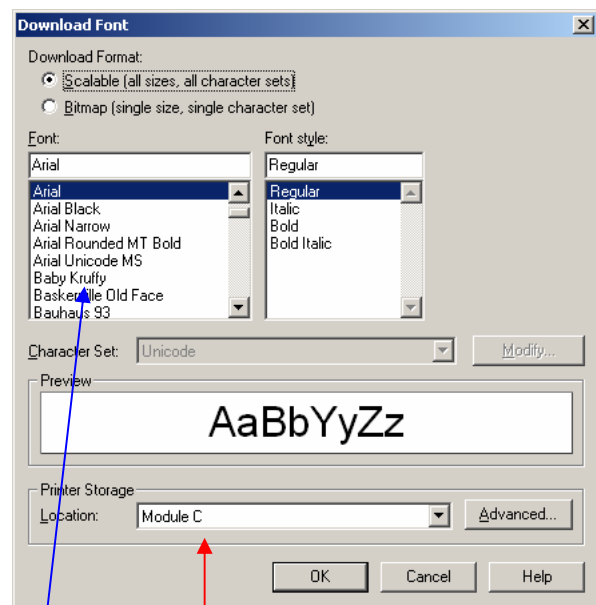
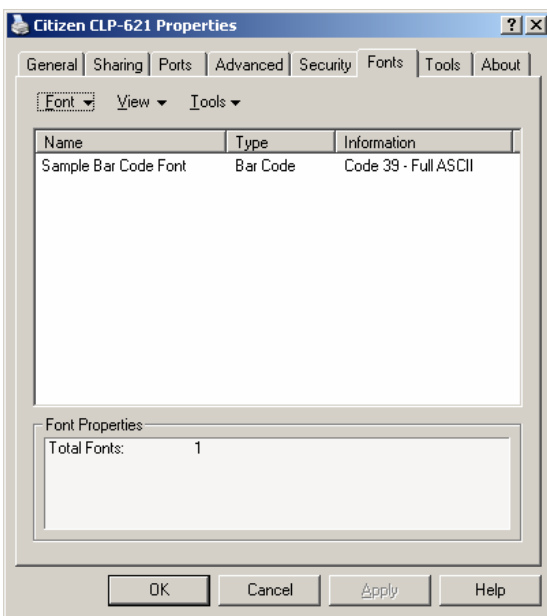


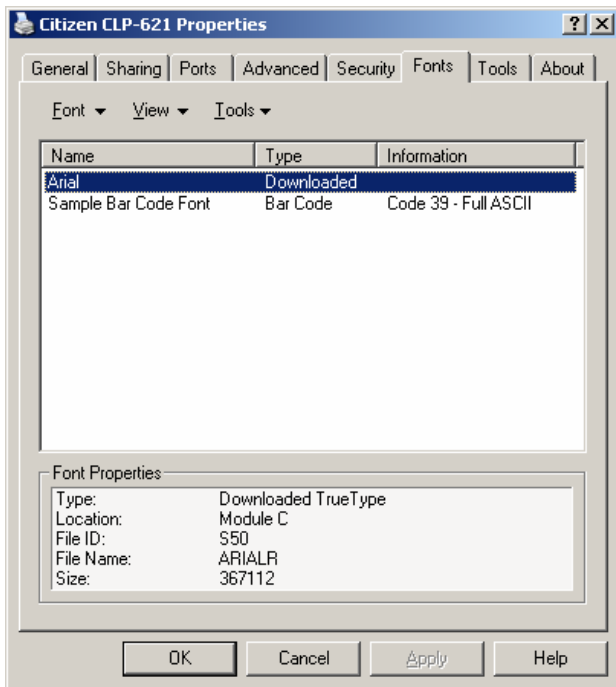
## Storing True Type fonts on a CLP printer, using the Seagull Printer driver

To download a True Type font to a printer (the driver currently works with CLP521, 621, 631, 7200e, 8301 and 9000 series) please follow the information below:

- 1 – Open the printer driver folder, found in “printers and faxes”
- 2 – Select the printer you want to use (our example is CLP 621)
- 3 – Right Click printer icon, then properties.
- 4 – Depending on the windows version being used (I have XP) you will see a number of TABS, click "Fonts".
- 5 – When the main screen opens below left, you will see three buttons (Font – View – Tools) with drop down arrows, select “Font”, another window appears, with a button marked "Download font", click this; and the screen below right “Download Font” appears



- 6 – You will be presented with a list of the True Type (TT) fonts available on your local PC (as shown above right). You can select any one of these to download.
- 7 – Look down the screen to the section “Printer Storage” (red arrow); you need to select a memory location where the font will be stored on the printer. Using C location (the default), the font will only be stored while the printer is Powered ON, turn it off and any fonts (or logos) stored here, will be lost.
- 8 – Go back up to the section headed “Font” (blue arrow), select the font you want (Arial is the selected example), will be downloaded to the printer. As mentioned in item 7, you may need to change the memory location to make sure it stays permanently (or at least as long as you want it to be stored). It is possible to have several fonts in the printer at any one time, all held in the Flash Ram (G location on the CLP 621) but size may be an issue (see note below).



9 – Screen on the left shows the new font has been downloaded.

When printing a downloaded True Type font, the printer driver is aware the font is stored in the printer and will only send raw text to the printer.

Best way to describe this;

- Using a downloaded TT font OR a printer font; the printer only needs to be told to print ABC.
- Using a TT font as part of a label the printer has to have every part of each letter A, B & C described in detail so it knows how to print it.

It is this which slows the printing process down

10 – The screen above left, shows the Arial font has been downloaded to the printer. If at a later stage you wish to delete this font from the printer, select it, click the “Font” button and the drop down window will offer the “delete” option at the bottom of this smaller screen.

It is possible to delete any or all downloaded fonts by clicking on the font name first and then the delete button through the drop down screen; the font will be removed from the printer’s flash memory as long as the printer is connected.

**Note** - Please note when using the Arial font (and Times New Roman), it is one of the largest fonts available in Windows and contains every character set available; therefore this one font will take up a large amount of the printer’s memory. Downloading an additional font, especially something like Times New Roman, which is of similar size, may over fill the Flash Ram area **BUT** there may not be a warning of any kind. When you first attempt to use the font selected, it may not work because the whole font was not saved to the printer’s memory.

We have help sheets on downloading a graphic (any printer) and true type fonts (only CLP 521/621/631, 6401, 8301 and 9000 series) to the Citizen CLP printers. These are in fact written as additional guides to the command reference manual, which while good, is not always the easiest document to understand.