

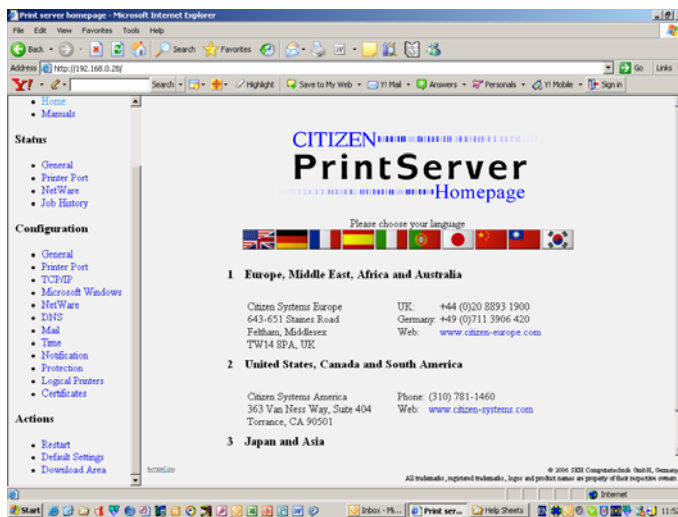
## Upgrading Ethernet or Wifi card firmware

### Firmware download

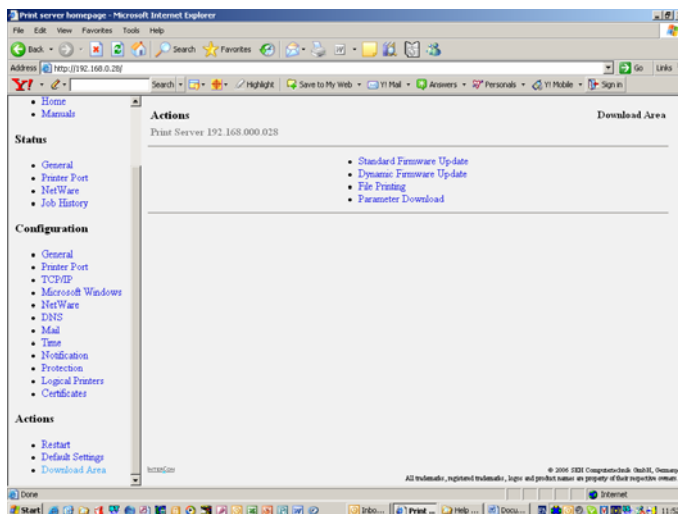
You need the latest version of the Ethernet or WiFi card firmware which can be obtained from your distributor. Distributors can get this from Citizen.

### Upgrading firmware

You first need to find the printer on your network, below is a screen shot showing what you should see, once you are communicating with the printer. If you cannot find the IP address you may need to do a Network card status print. With the printer turned on, press the small blue button on the network card itself, at the back of the printer The PrintServer screen (below) is actually coming directly from the Ethernet card (in this case) of the printer we are about to upgrade.

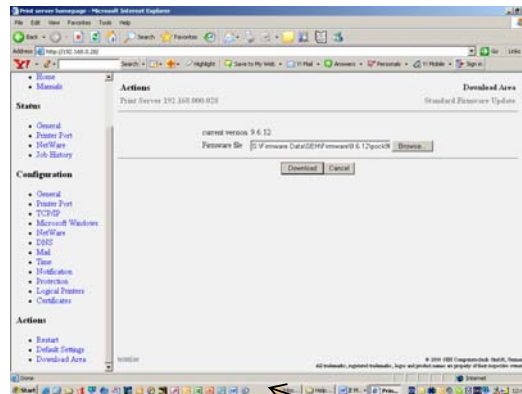
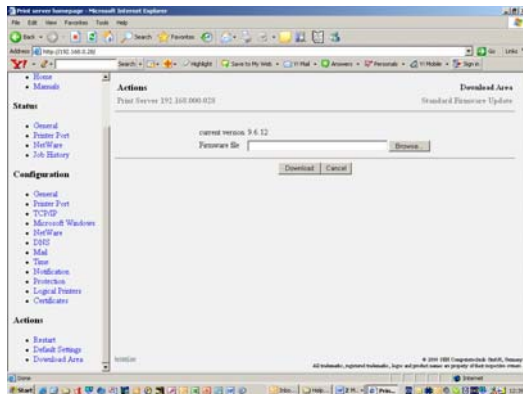


Go to the Actions section > download area, you will see a screen like the one below, click on “standard firmware update”.



# CITIZEN

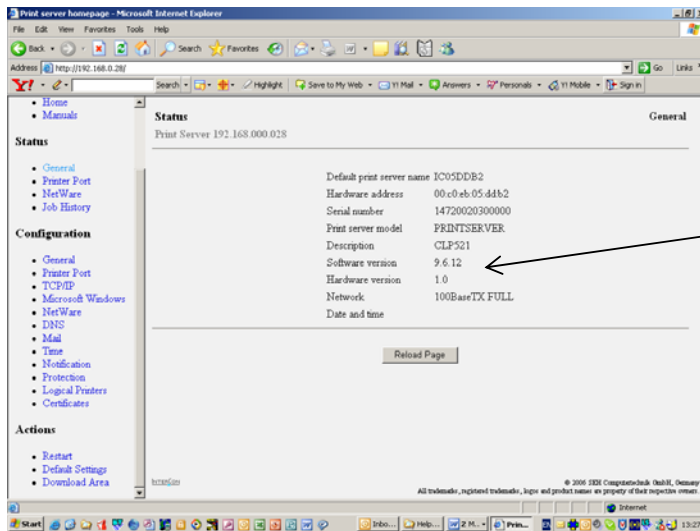
You will be presented with the screen on the left, click browse and you will be able to select the location on your PC where you downloaded the Ethernet/WiFi firmware from our web site, see the right hand screen showing the selected path on my PC



Bar will appear showing download progress

Just need to click on the download button, the bin file (you down loaded) is then sent to the Ethernet/WiFi card automatically. You will notice the file down loading at the bottom of the web page screen, it takes about 90 seconds.

When the down load is complete the screen changes and will state “Print server is restarting”, after a few seconds this will change then show the renewed Status page showing the new version of firmware.



New firmware version

Firmware upgrade should then be complete.

These network cards, both Ethernet and WiFi, have proved very reliable.